

BROOKLINE HIGH SCHOOL EXPANSION

BHS EXPANSION ADVISORY COMMITTEE MEETING
November 19, 2018



AGENDA: ITEMS FOR DISCUSSION

1. RECAP
2. SCHEDULE UPDATE
3. DESIGN UPDATE - INTERIORS
4. MBTA UPDATE
5. NEXT STEPS



DESIGN AND DOCUMENT DEVELOPMENT SINCE LAST MEETING

9/26 BHS EXPANSION ADVISORY COMMITTEE MEETING: Focused on Exterior

SINCE 9/26: Preparation for the 11/30 pricing document submission with a focus on:

Technical Coordination

Plan Development

Interior Finishes

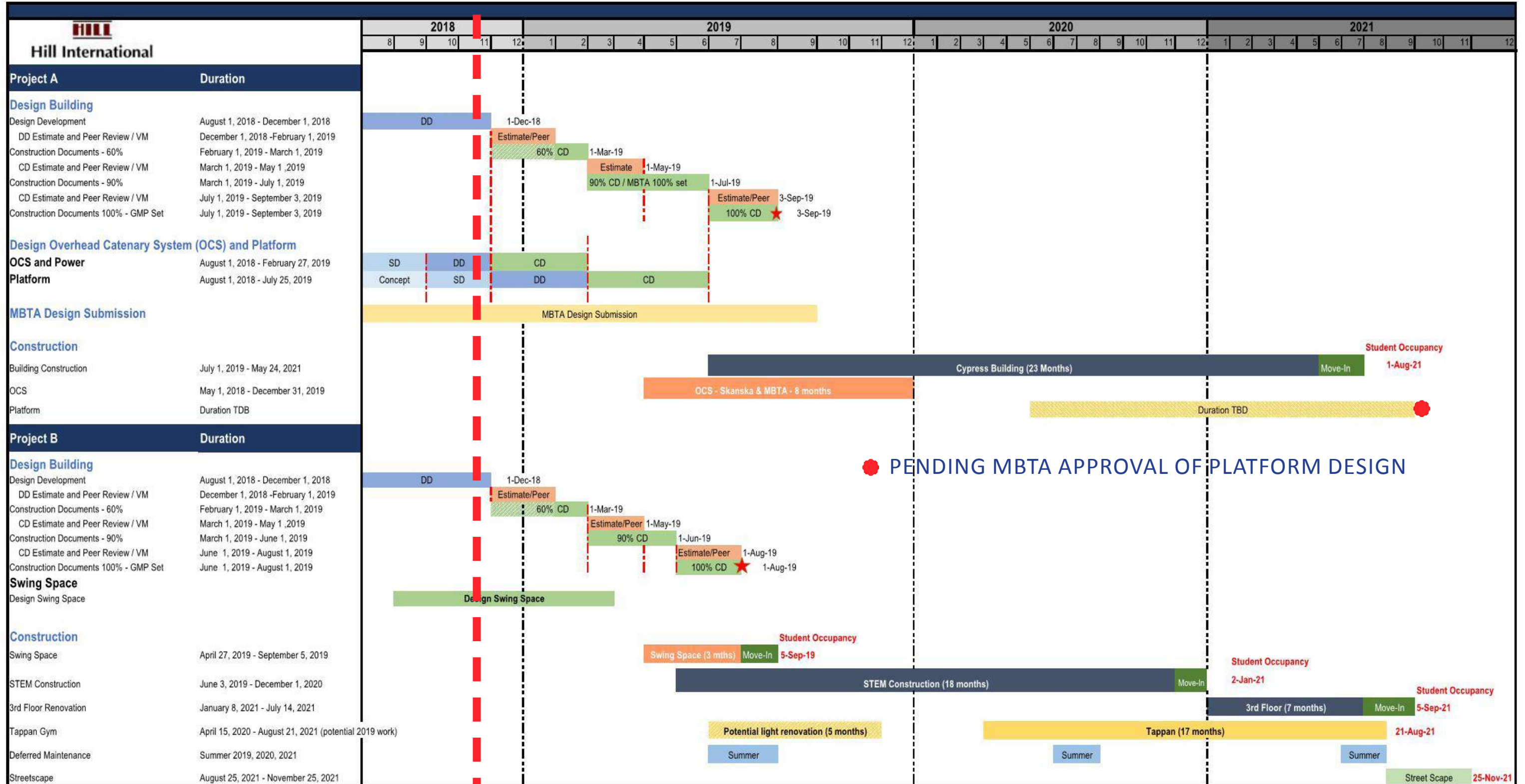
11/30 Design Development Pricing Set submission



SCHEDULE UPDATE

September 26, 2018

Brookline High School Expansion Project PRELIMINARY Summary Schedule



BHS EXPANSION INTERIORS



- FINISHES OVERVIEW
- PLAN UPDATES
 - CYPRESS BUILDING
 - STEM WING
 - THIRD FLOOR
 - TAPPAN ADDITION & RENOVATION



INTERIOR MATERIALS PALETTE - EXISTING HIGH SCHOOL



- ACT TILE CEILINGS
- DRYWALL CEILINGS
- PAINTED DRYWALL
- CERAMIC WALL TILE
- PLASTIC LAMINATE CASEWORK
- EPOXY RESIN WORK SURFACES
- INTERIOR GLAZING
- BULLETIN BOARDS / DISPLAY CABINETS
- TERRAZZO FLOORING (MAIN ENTRY)
- VCT FLOORING (MOST CORRIDORS)



INTERIOR MATERIALS PALETTE - COOLIDGE CORNER SCHOOL



- ACT TILE CEILINGS
- DRYWALL CEILINGS
- PAINTED DRYWALL
- CERAMIC WALL TILE
- WOOD CASEWORK
- EPOXY RESIN WORK SURFACES
- INTERIOR GLAZING
- RUBBER SHEET FLOORING
- CARPET (LIBRARY)

DURABLE AND BROOKLINE TESTED FINISHES

FLOORING: Terrazzo, Sheet linoleum w/ welded seams, carpet tile (limited use)

WALLS: Large format porcelain tile, metal lockers, glass, ceramic tile (bathrooms, stairs)

CEILINGS: ACT, GWB, specialty acoustic ceilings (cafeteria / STEM entry, Tappan entry)

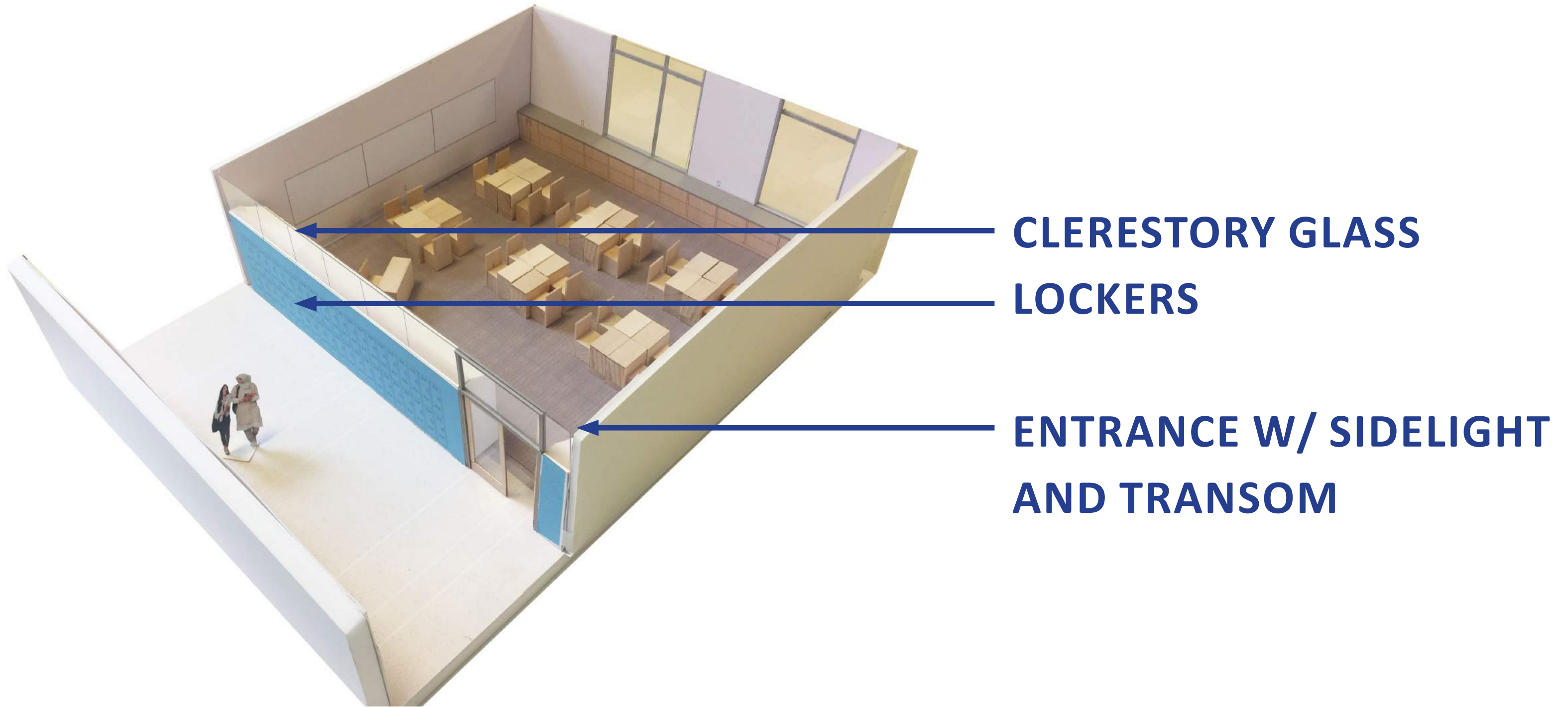
LIGHTING: All LED (limited number of fixture types)



CYPRESS BUILDING



GENERAL USE CLASSROOM

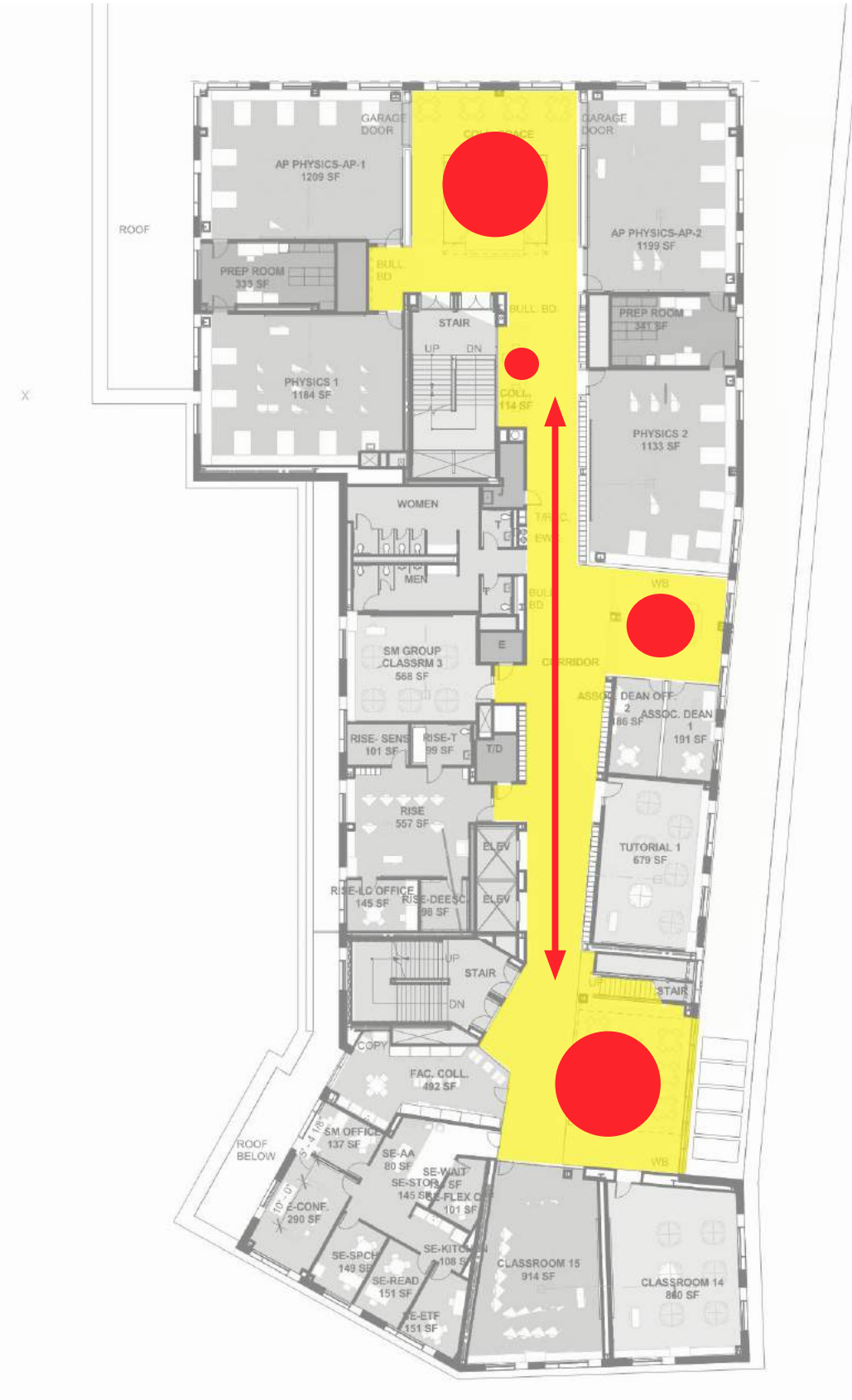


CLERESTORY GLASS

LOCKERS

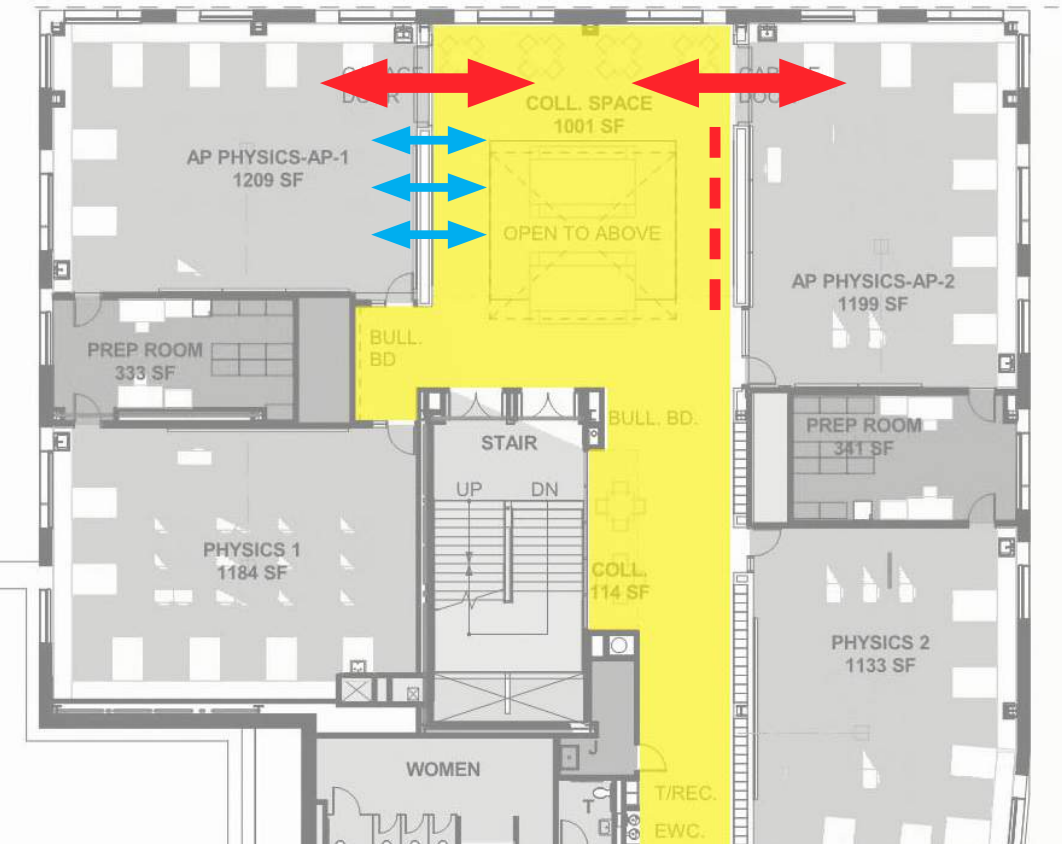
**ENTRANCE W/ SIDELIGHT
AND TRANSOM**

HALLWAY ORGANIZATION AND DESIGN: COLLABORATION SPACES



**3RD
FLOOR**

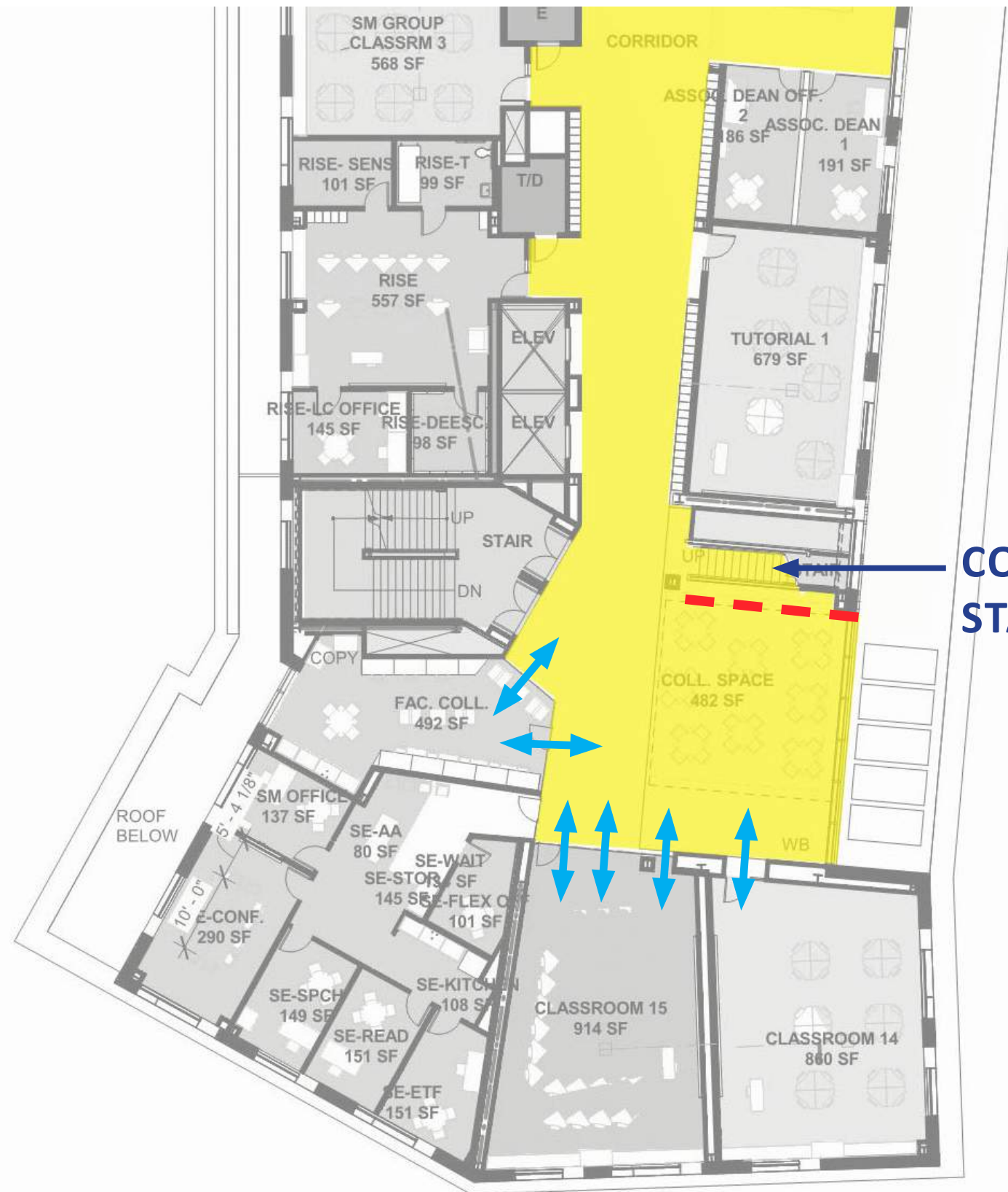
HALLWAY ORGANIZATION AND DESIGN: PHYSICS COLLABORATION



HALLWAY ORGANIZATION AND DESIGN: PHYSICS COLLABORATION



HALLWAY ORGANIZATION AND DESIGN: SOUTH COLLABORATION SPACE



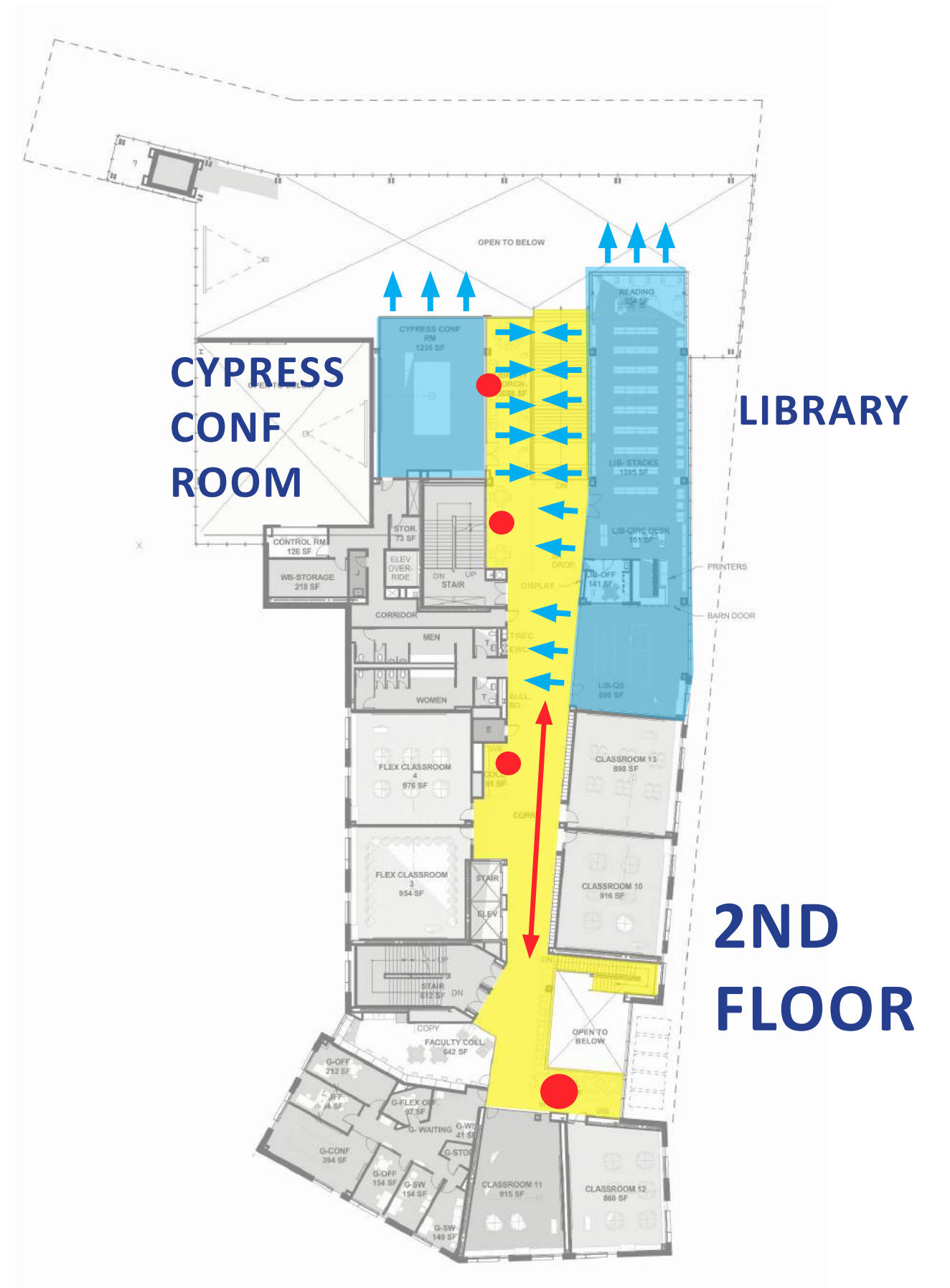
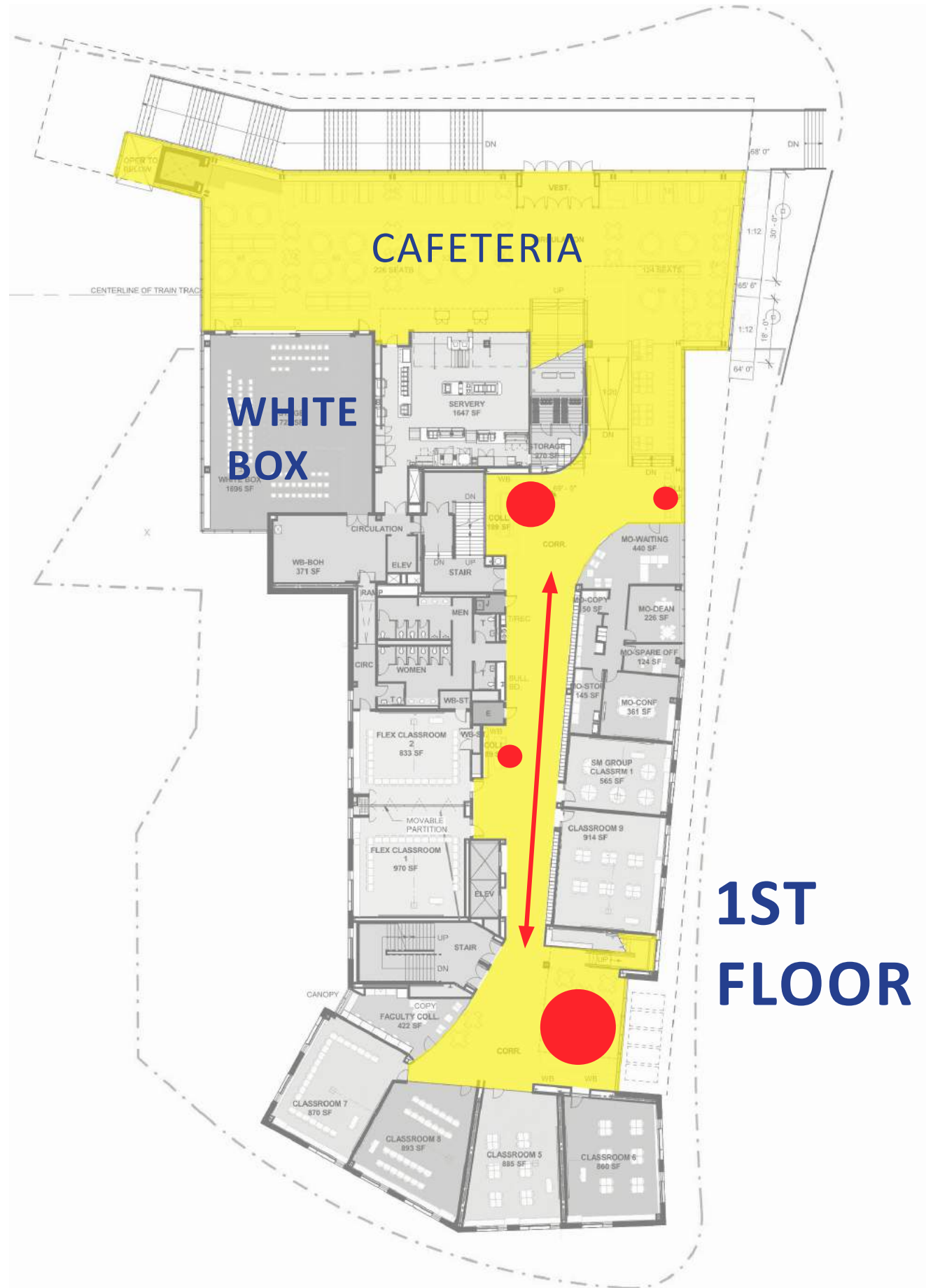
CONNECTING STAIR



HALLWAY ORGANIZATION AND DESIGN: COLLABORATION SPACES



HALLWAY ORGANIZATION AND DESIGN: COLLABORATION SPACES



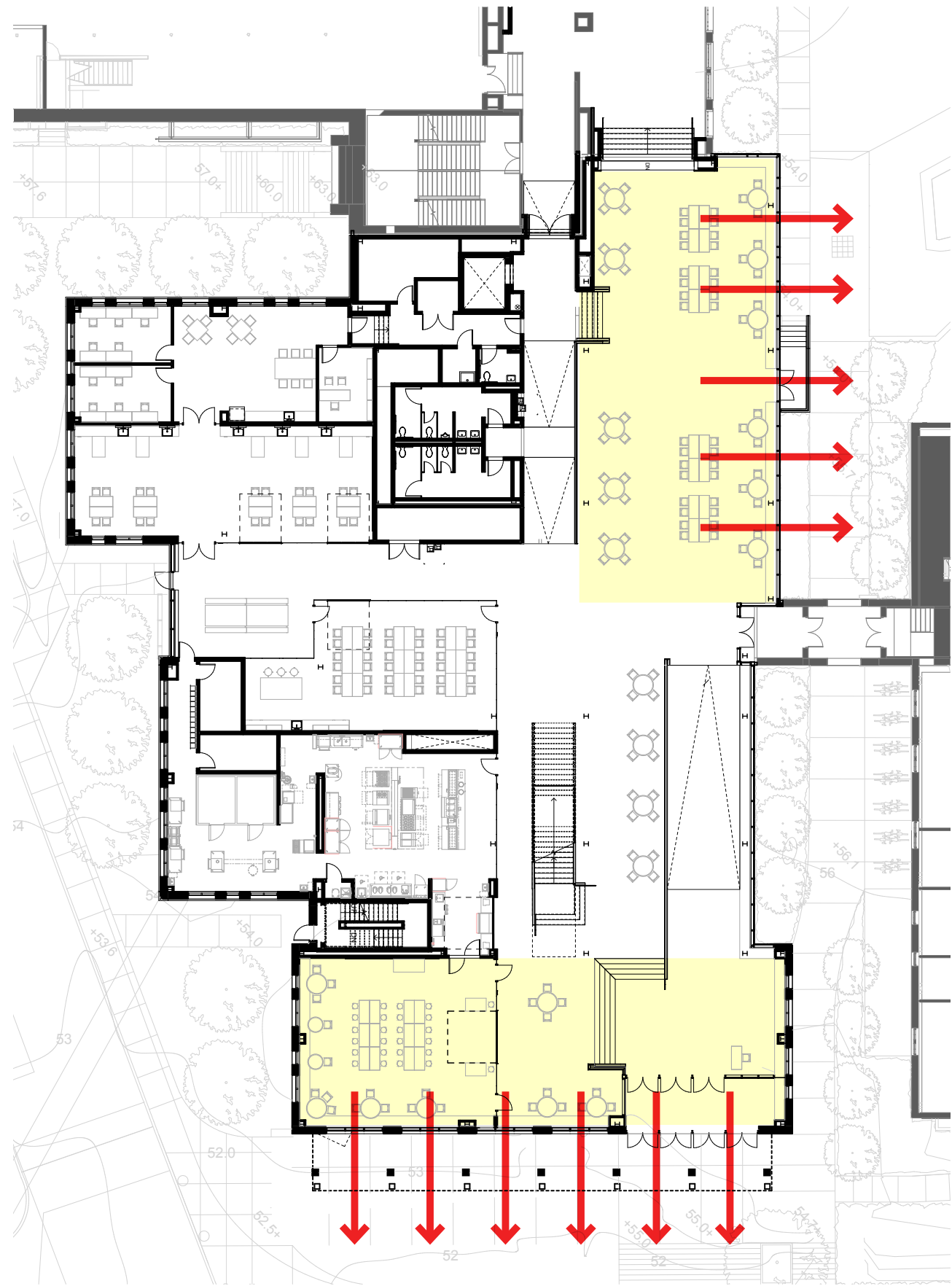
CAFETERIA



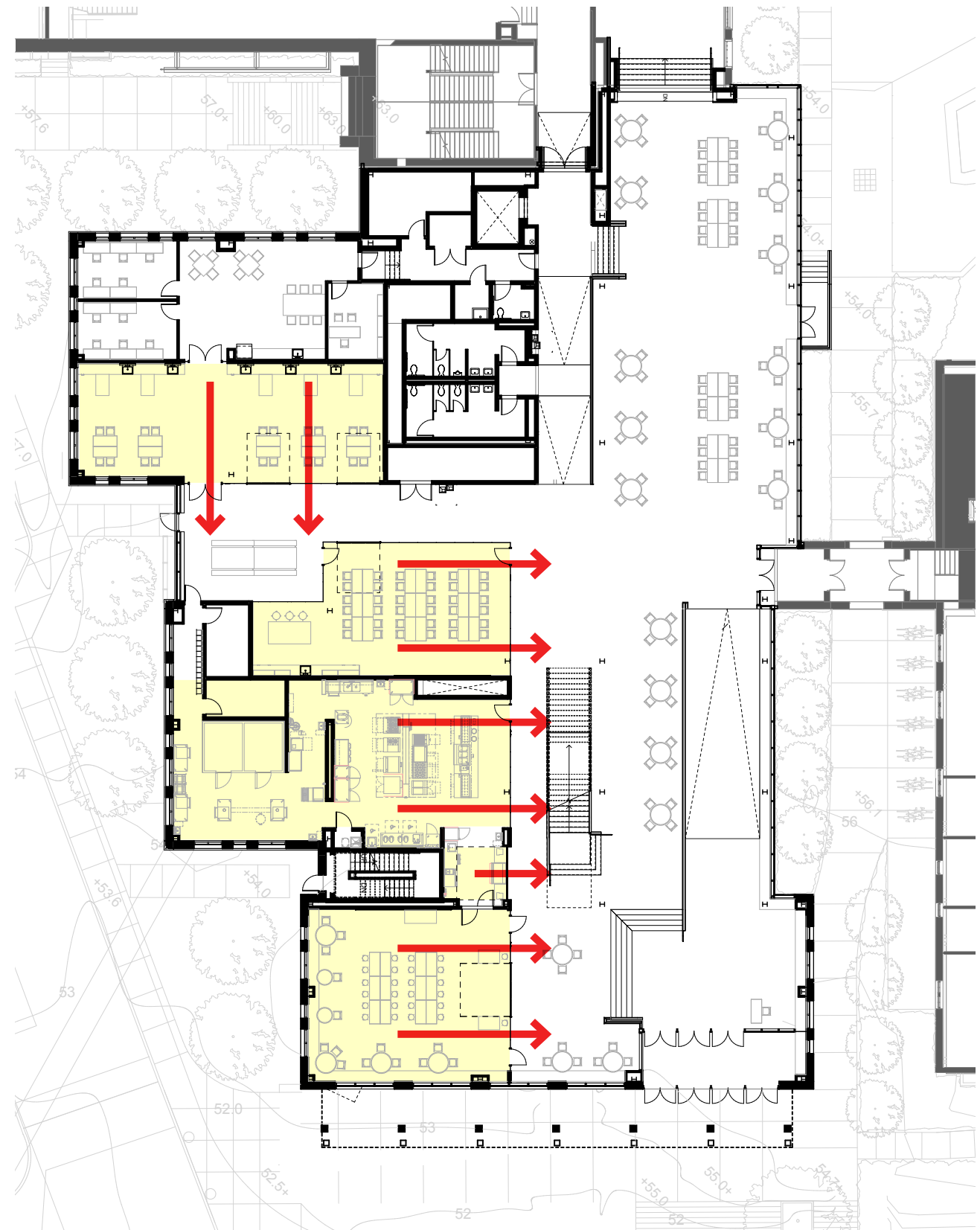
STEM WING



STEM WING - GROUND FLOOR 'PORCHES'

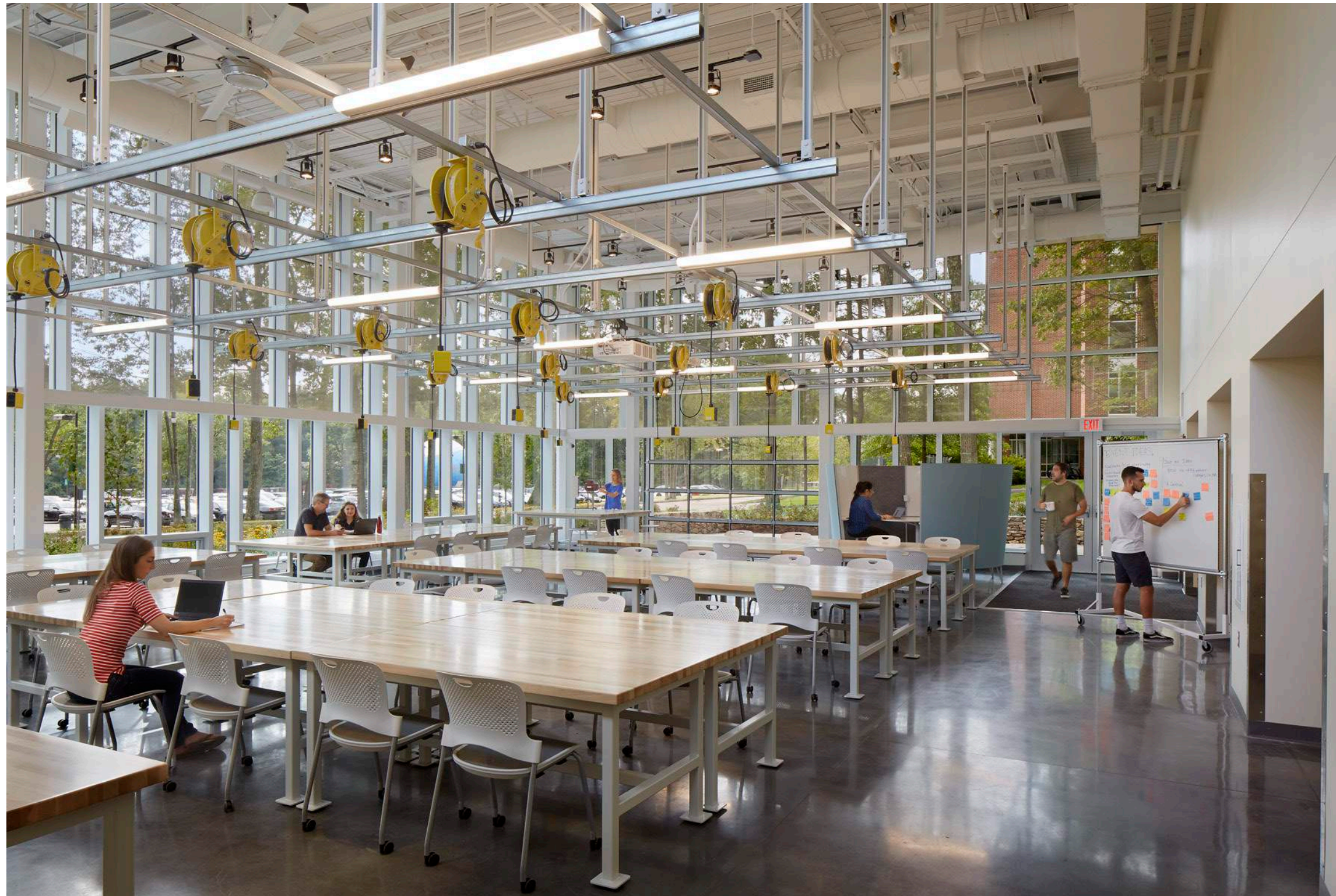


STEM WING - GROUND FLOOR MAKER SPACE VISIBILITY



STEM WING - GROUND FLOOR MAKER SPACE VISIBILITY

BABSON COLLEGE
WEISSMAN CENTER

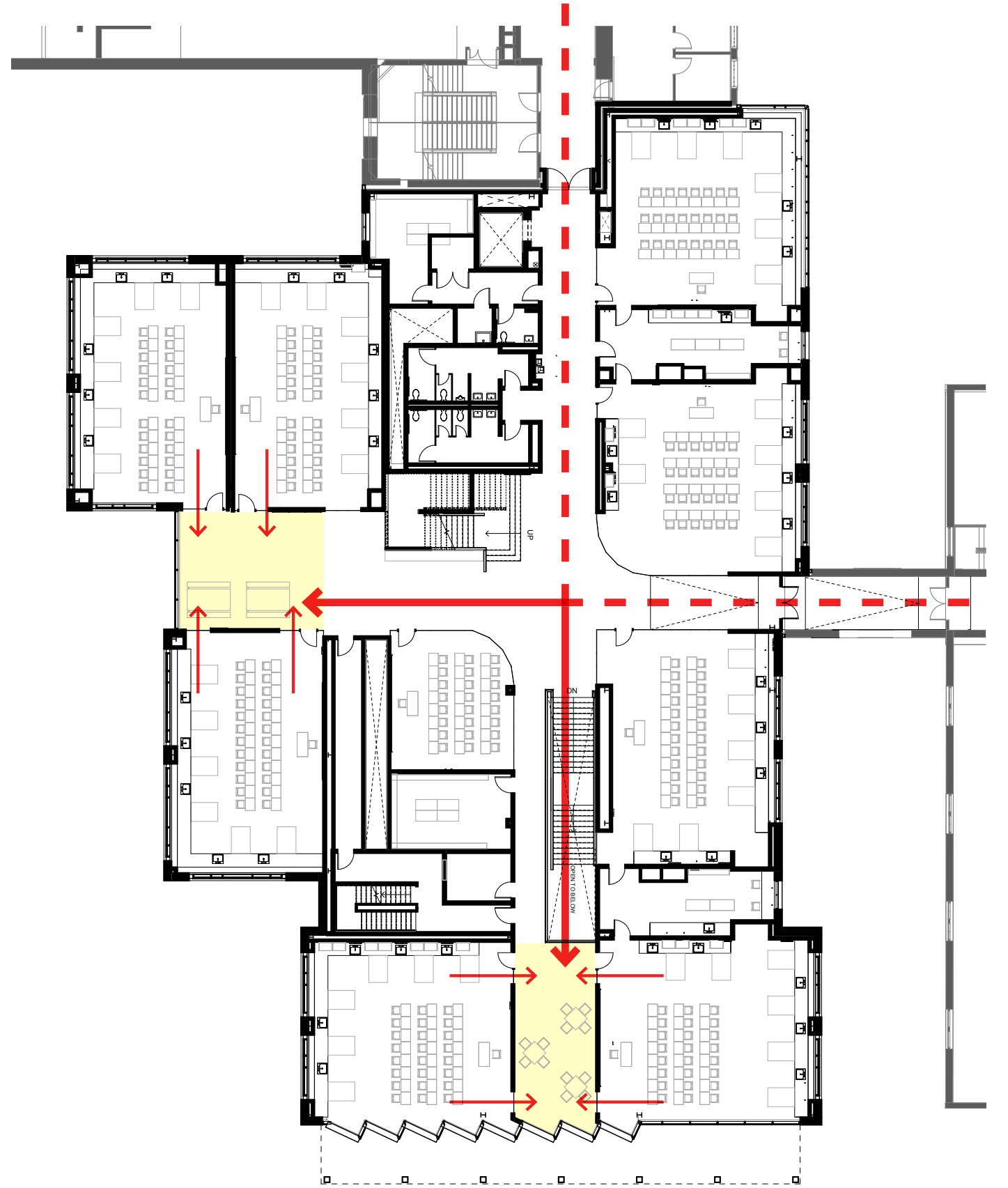
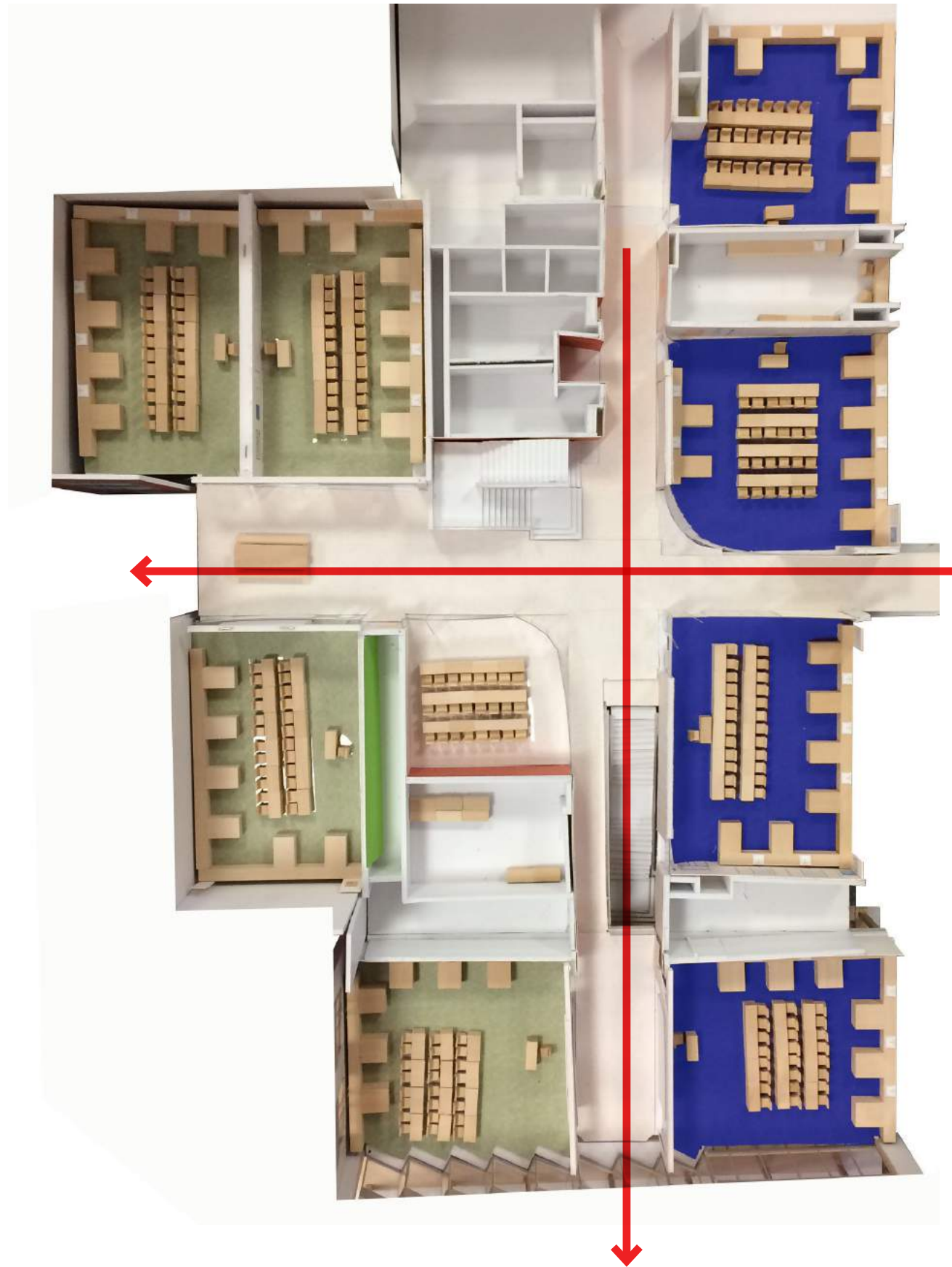


STEM WING - GROUND FLOOR MAKER SPACE VISIBILITY

NOBLE & GREENOUGH
PHYSICS LAB



STEM WING - UPPER FLOOR COLLABORATION SPACES



STEM WING - UPPER FLOOR COLLABORATION SPACES

ECSU FINE ARTS
INSTRUCTIONAL CENTER



STEM WING - UPPER FLOOR COLLABORATION SPACES

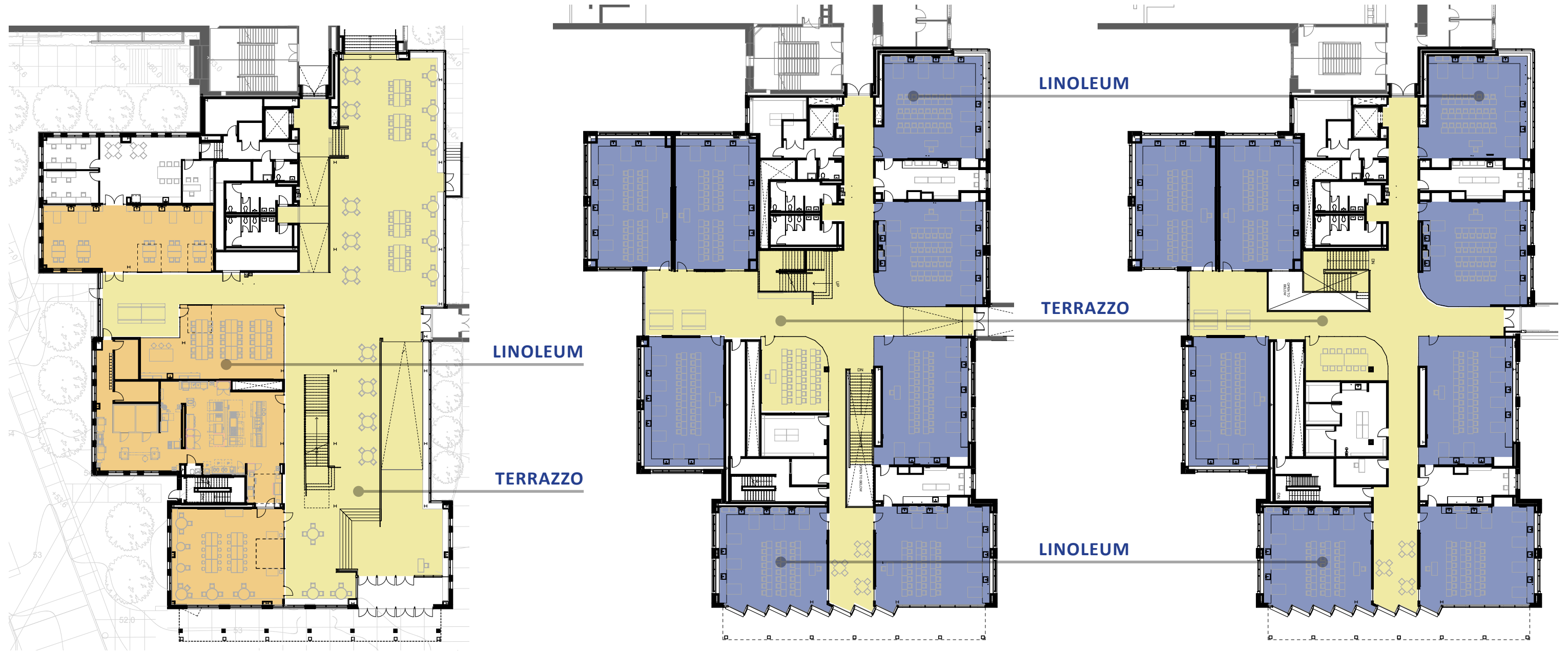
MILTON ACADEMY
PRITZKER SCIENCE CENTER



STEM WING - UPPER FLOOR COLLABORATION SPACES



STEM WING - FLOOR FINISHES



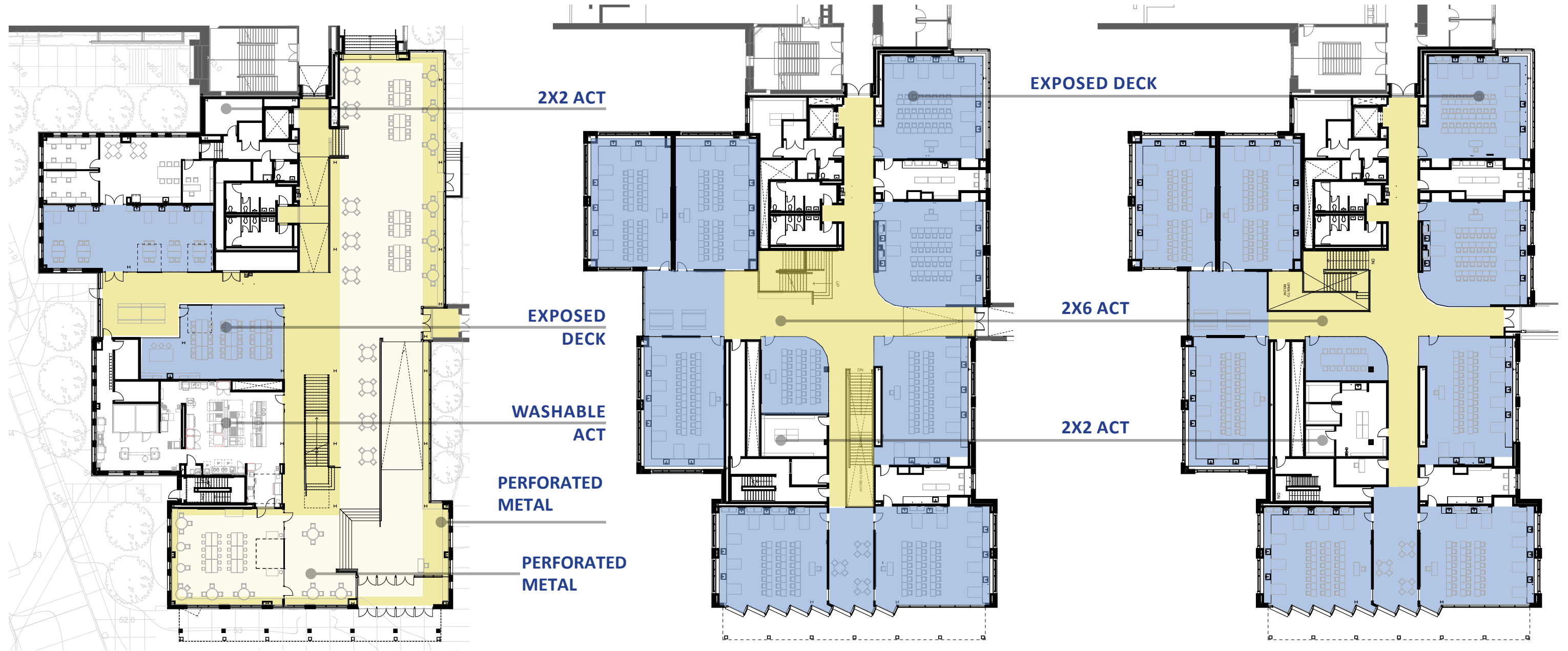
LEVEL 01 PLAN

LEVEL 02 PLAN

LEVEL 03 PLAN



STEM WING - CEILING FINISHES



LEVEL 01 PLAN

LEVEL 02 PLAN

LEVEL 03 PLAN



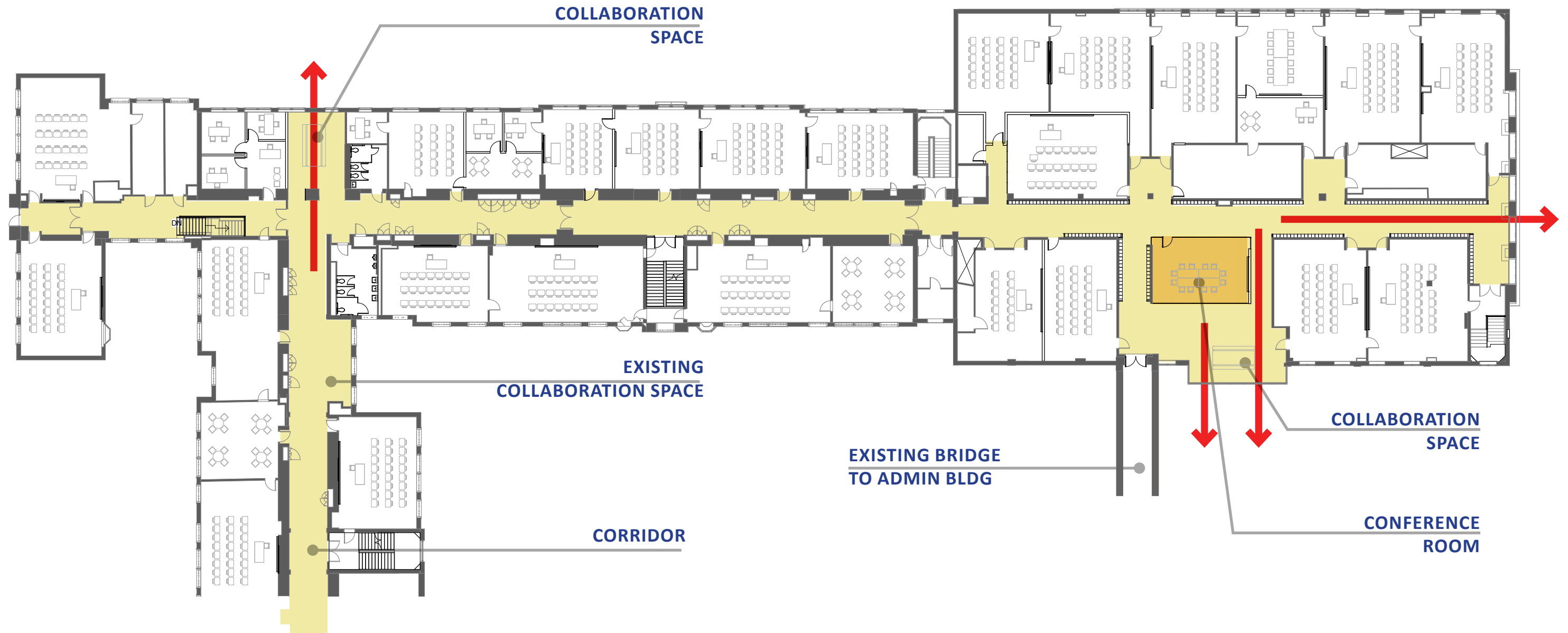
STEM WING - CEILING FINISHES



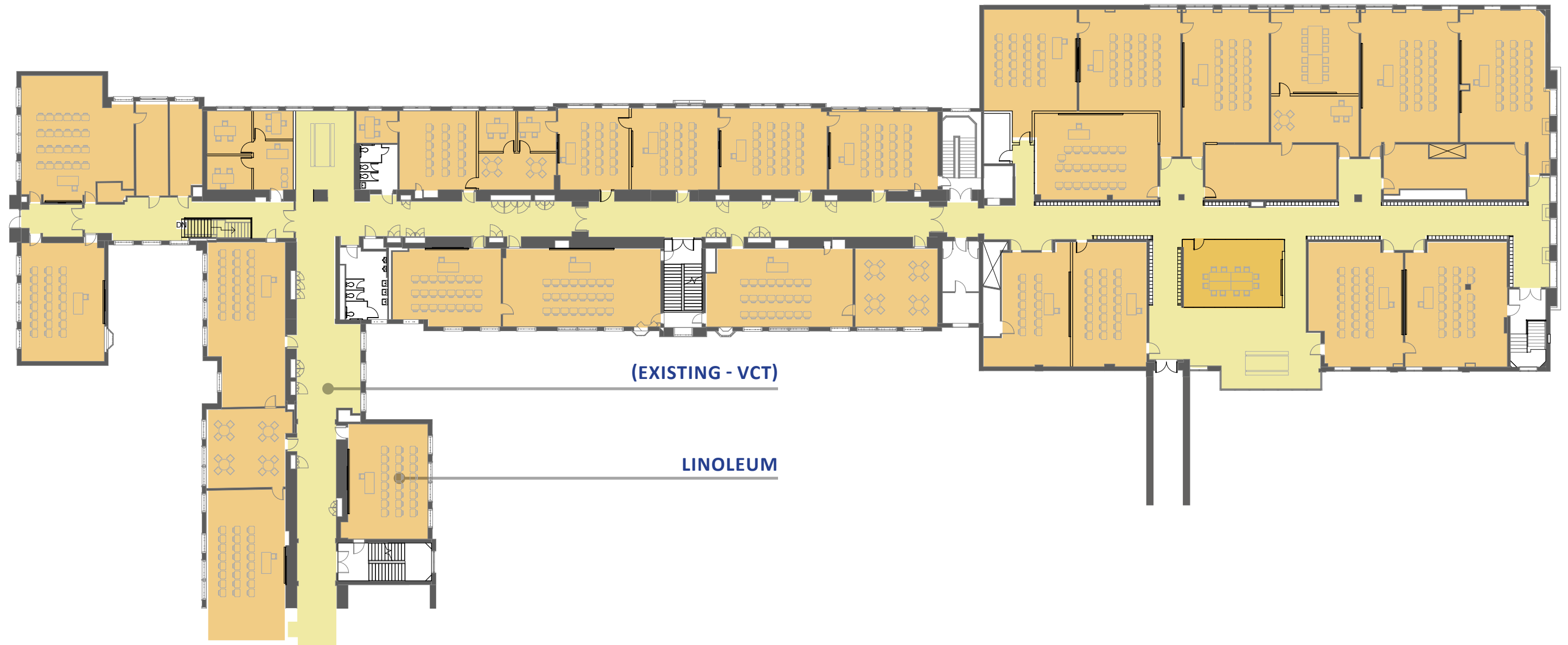
THIRD FLOOR RENOVATION



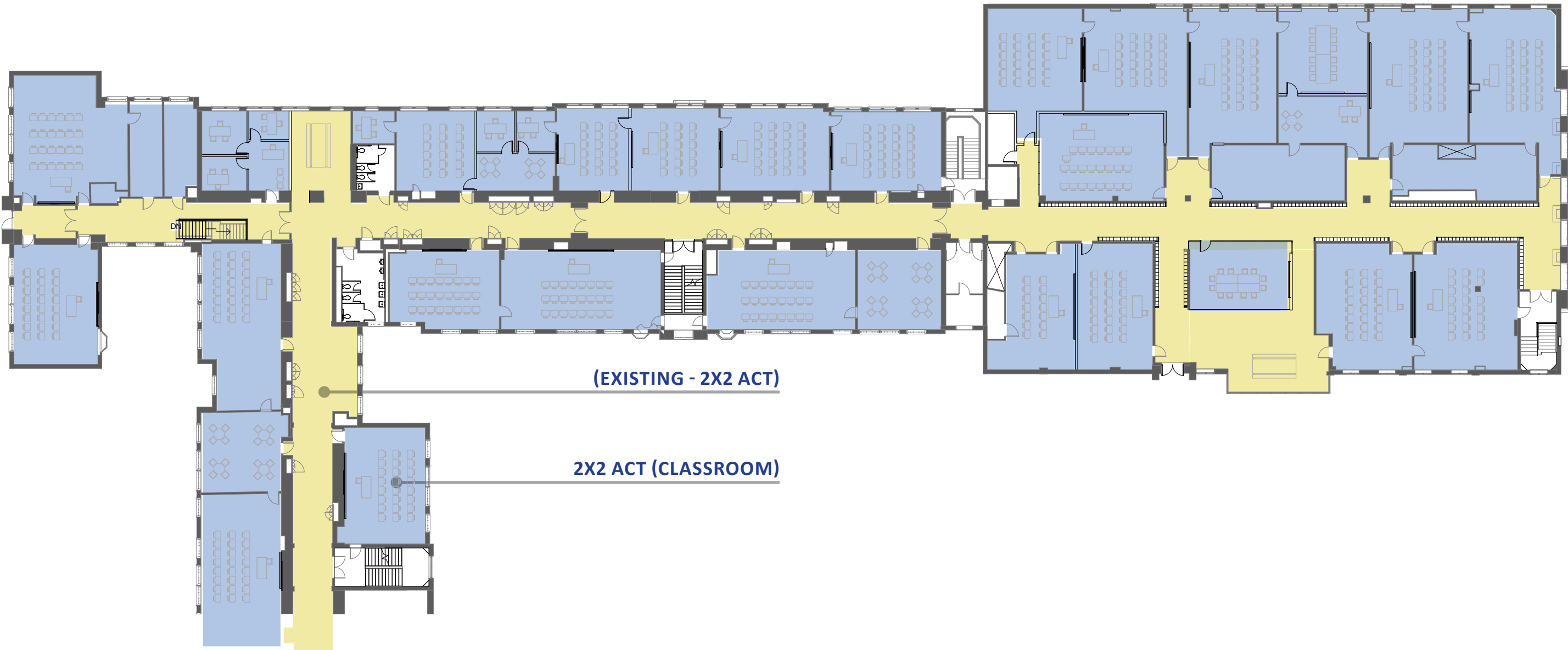
THIRD FLOOR RENOVATION - OVERALL PLAN



THIRD FLOOR RENOVATION - FLOOR FINISHES



THIRD FLOOR RENOVATION - CEILING FINISHES CONCEPT

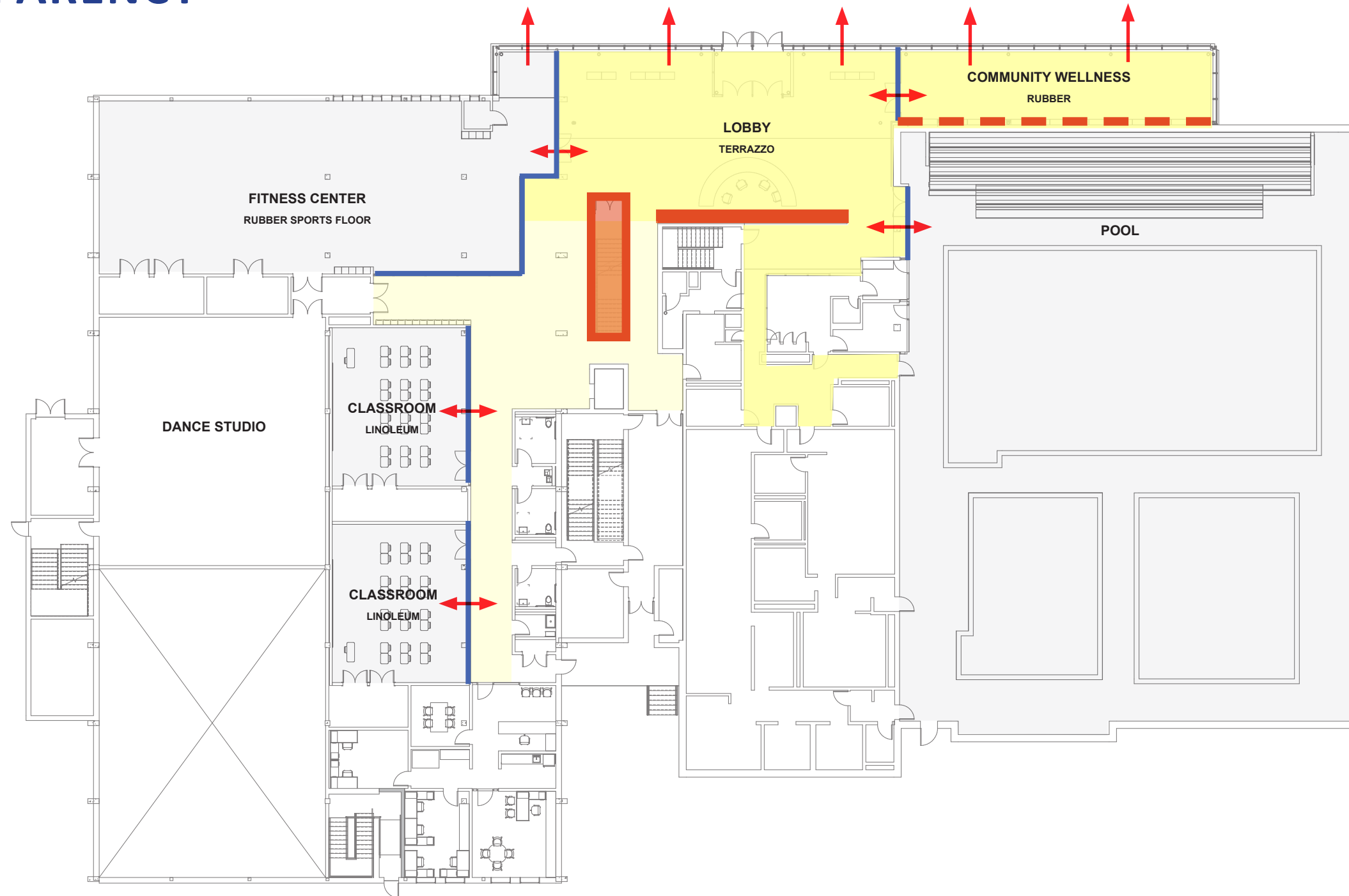


TAPPAN ADDITION & RENOVATION



TAPPAN GYM - GROUND FLOOR CONCEPT

- ORIENTATION
- TRANSPARENCY

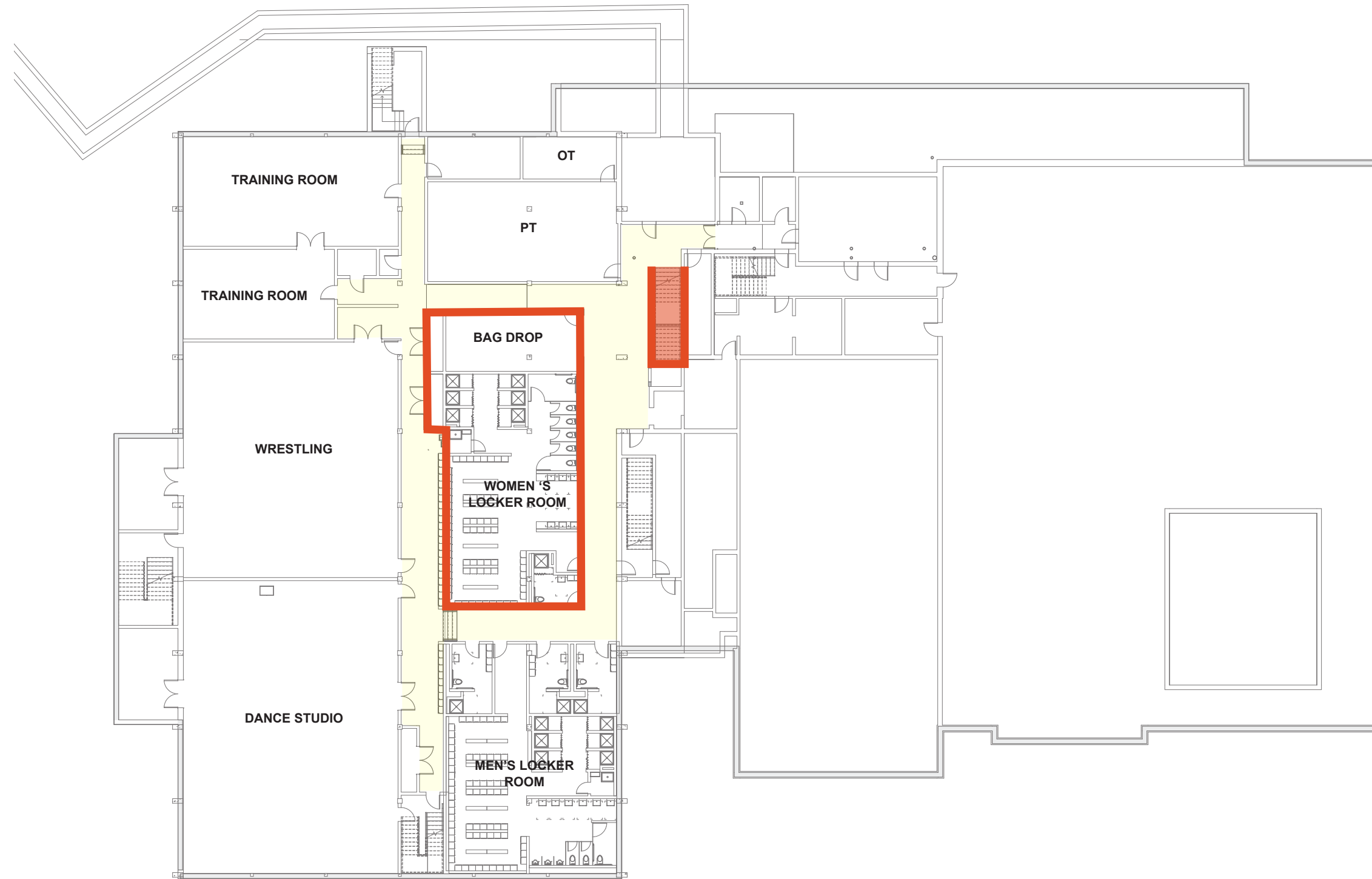


LEVEL 01 PLAN

TAPPAN GYM - FRONT PORCH



TAPPAN GYM - BASEMENT CONCEPT



LOWER LEVEL



MBTA UPDATE



END

